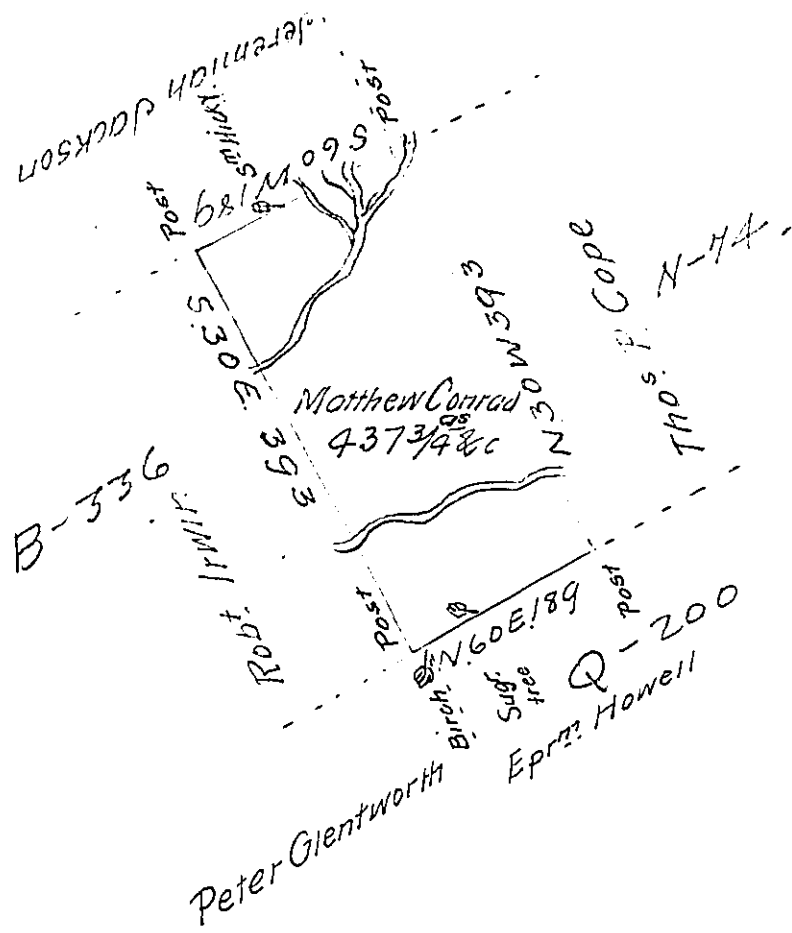


DeHison -  
Luzerne.



A Draft of a Tract of Land called \_\_\_\_\_ situate in the County of Luzerne containing Four hundred and thirty seven acres  $3/4$  & all. Surveyed for Matthew Conrad the 28<sup>th</sup> day of May 1793 by Virtue of a warrant dated the 1<sup>st</sup> day of April 1793  
by W<sup>m</sup> Gray D.S.

To Daniel Brodhead Esq<sup>r</sup> }  
Surv<sup>r</sup> Gen<sup>l</sup> }

IN TESTIMONY that the above is a copy of the original remaining on file in the Department of Internal Affairs of Pennsylvania, made conformably to an Act of Assembly approved the 16th day of February, 1833, I have hereunto set my Hand and caused the Seal of said Department to be affixed at Harrisburg, this fourth day of May 1912

*Henry Howell*  
Secretary of Internal Affairs.